

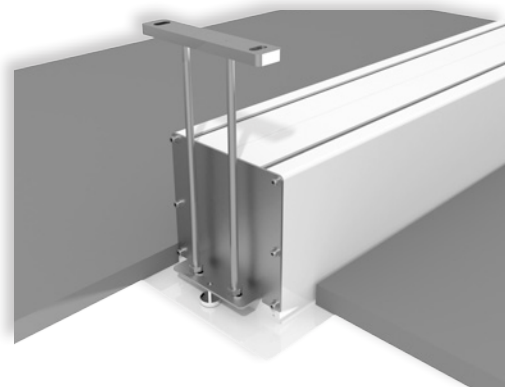


GIOTTO TENSIONED is the most innovative UPGRADABLE electric **in-ceiling** projection screen on the market. Its mechanical construction makes it an ideal and unique solution for in-ceiling installations both in residential and AV professional environments.

The Giotto is easy to mount and has the **possibility to install the roller tube with projection cloth after the installation is finished** and to substitute the projection surface when required.

Giotto Tensioned has black side borders cut in hour-shape glass that together with the tension system assure a perfect flatness to the projection surface. Moreover, a 5 cm. black bottom border and a black top drop of 30 cm. are included.

Available in 4:3, 16:9 and 16:10 formats or bespoke sizes.

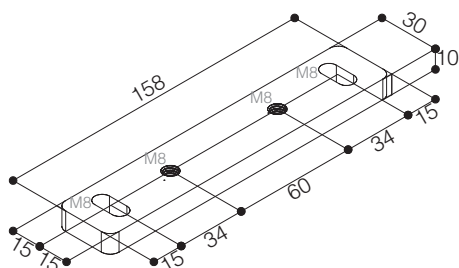


LEFT SIDE VIEW

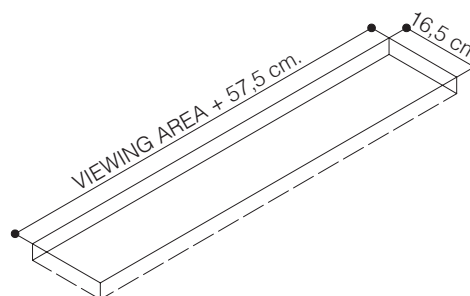
- | | | | | | | |
|--|-------------------------------|---|---|---------------------------------|---|---|
|
n.2
Ceiling
mounting
brackets |
n.1
On/off
switcher |
RF Remote
control with
receiver
built-in motor |
Kit RF Remote
control with
external
receiver |
Interface
switch 12 volt |
Low voltage
contact
interface |
Nm 9
Rpm 26

Faster and
quiet motor |
| INCLUDED | | OPTIONAL pag 62-63 | | | | |

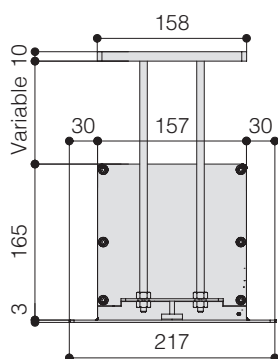
CEILING BRACKET



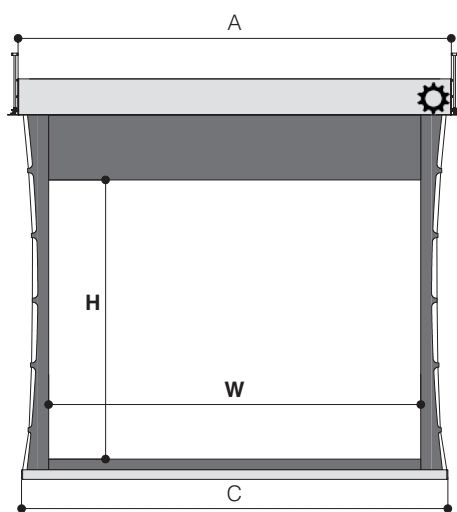
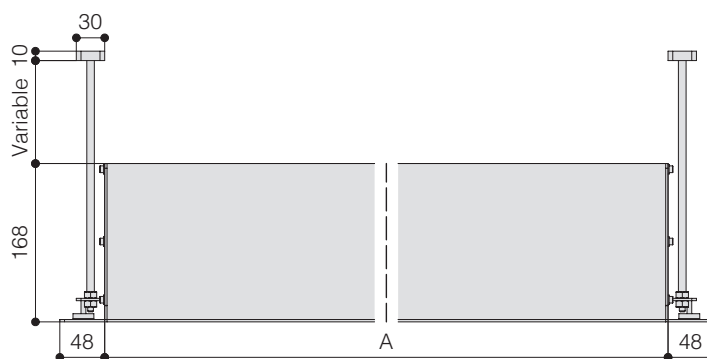
DIMENSIONS OF THE HOLE TO BE MADE IN THE FALSE CEILING



HOUSING SIDE VIEW



HOUSING FRONT VIEW



TECHNICAL SPECIFICATIONS

- Silent motor system provides a smooth and quiet operation

	<i>Up to 250 cm.</i>	<i>From 250 cm.</i>
• Power:	6 Nm	10 Nm
• Speed:	17 rpm	17 rpm
• Power supply:	230V / 50 Hz	230V / 50 Hz
• Consumption:	137 W	156 W
• Certification:	IMQ	IMQ
- Housing manufactured from aluminium
- Lower part of the housing, trap door and bezel sprayed with white epoxy powders (RAL 9010)
- Black dowel bar: height 44 mm. - depth 17 mm.
- Two ceiling mounting brackets with four threaded rods 100 cm. long
- On/Off switcher included
- Flame retardant projection surfaces - classification M1, M2 and B1
- Side black borders of 5 cm. width (in the narrowest point), black bottom border of 5 cm. and black top drop of 30 cm.
- Hour-shape glass tensioning system to provide perfect flatness
- Minimum height required in the false ceiling: 17 cm
- Screen housing available in different colours (*optional*)

The measures in the drawings are expressed in millimetres.

DIMENSIONS measures in cm

4:3 Ratio Viewing area (WxH)	16:9 Ratio Viewing area (WxH)	16:10 Ratio Viewing area (WxH)	Overall dimensions A - C	Approx. net weight (Kg)
160 x 120	160 x 90	160 x 100	209,5 - 194	27
180 x 135	180 x 101	180 x 112	229,5 - 214	30
200 x 150	200 x 112	200 x 125	249,5 - 234	33
220 x 165	220 x 124	220 x 137	269,5 - 254	35
250 x 190	250 x 140	250 x 156	299,5 - 284	39
300 x 225	300 x 169	300 x 187	349,5 - 334	45
350 x 265	350 x 197	350 x 219	399,5 - 384	52
400 x 300	400 x 225	400 x 250	449,5 - 434	58

PROJECTION CLOTHS

Front projection surfaces	Gain	
Matte White	1.2	
Lumi Grey	0.8	
Microperforated	1.2	
Lumi Grey Microperforated	0.8	
Cinesound*	0.7	
Bright Contrast 3D*	1.4	
Ultra HD	1.2	

*Limited in height

Warranty: 5 years on the motor - 24 months on the other components

